



Phoenix Product Data Sheet

Optimized for use in industrial hazardous areas.

The **Phoenix** is a configurable sensor capable of most in-line process measurements. Available wavelength ranges span the UV through the MIR. The unique sensor adapter accepts a variety of process interfaces and even permits changing them in the hazardous area.

In-line sensor for powders, liquids, gels, and gasses. Measure color, concentration, moisture, impurities, and cleaning. Measure in transmission or reflection. Quality and composition in real-time.



Configurations

Common specifications:

Hazardous area certification: IECEx Zone 1, US/Can Class 1, Div 1; gas and dust

Enclosure: IP 67; 316L stainless steel

Operating ambient temperature: 5 °C – 45 °C; optional cooling/heating for extended temperature range.

Process temperature: -10 °C – 120 °C; interface dependent; optional cooling/heating

Voltage: 24 VDC.

Connections: Via included PLC; power, ethernet. Outputs include industrial protocols OPC, Ethernet IP, FieldBus, Mod-Bus, ProfiNet. Others optional.

Data acquisition and control software with chemometrics

UV-Vis / Color

Wavelength range: 200 – 1000 nm

Light source: Xe flash, pulsed tungsten halogen, combined

NIR/ Extended NIR

Wavelength range: 1000- 2400 nm

Light source: pulsed tungsten halogen

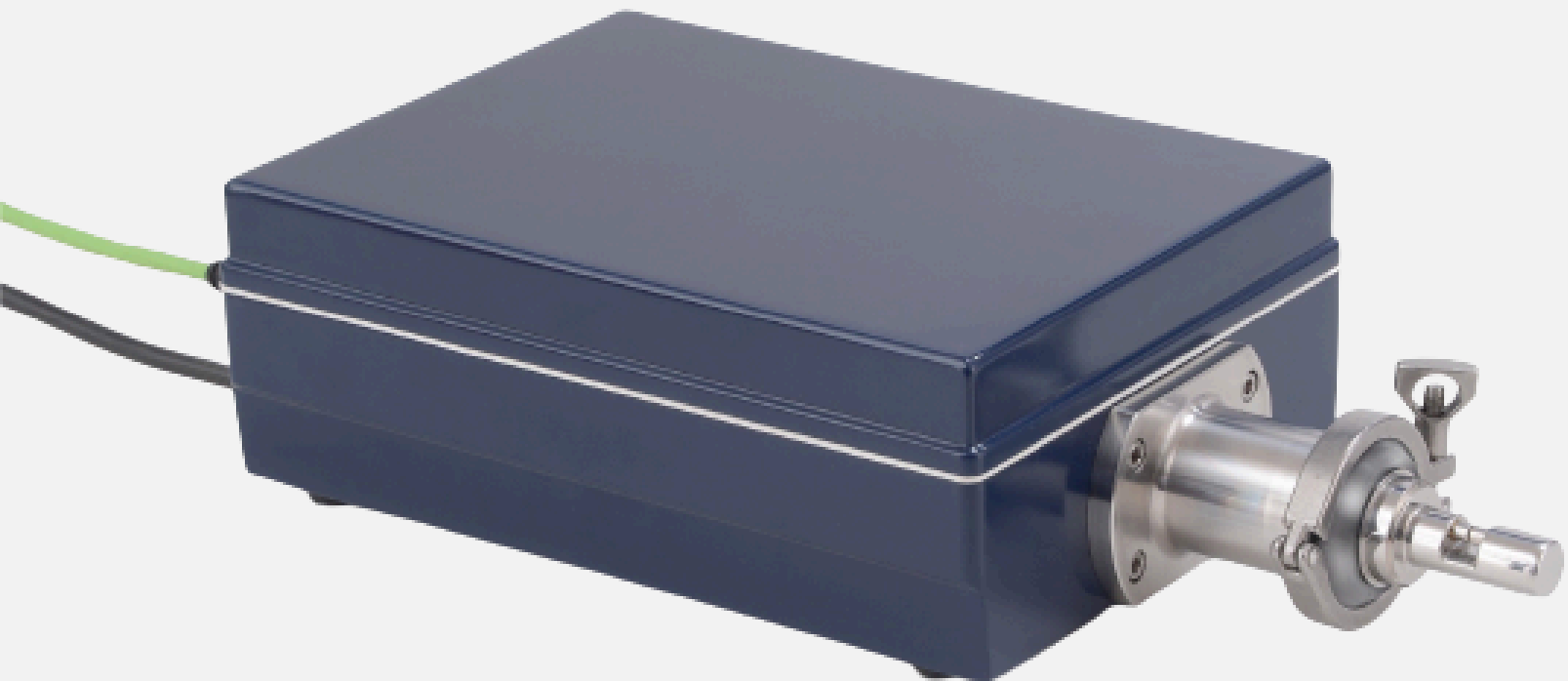
MIR

Multiple combinations of sources and detectors for various wavelength regions

Design your own

Additional Phoenix Options

- Aluminum enclosure
- Laboratory version



- Anodized aluminum enclosures for use in a non-hazardous rated area
- Laboratory version in polymer enclosures, without the companion PLC



Process Sensor



- Fixed or flexible mounting to sensor adapter
- Optical and electrical connections



- Flow cells and probes
- Transmission, reflectance, ATR
- Window options



Contact Nova Industrial Analytics
info@novaitx.com

Europe: +49 7175 3844900

North America: +1 (518) 768-4479